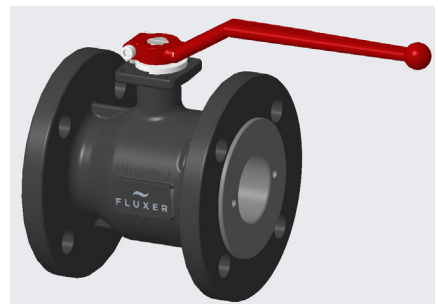
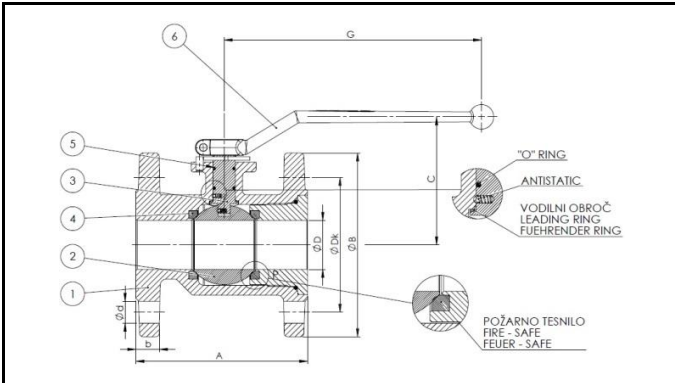
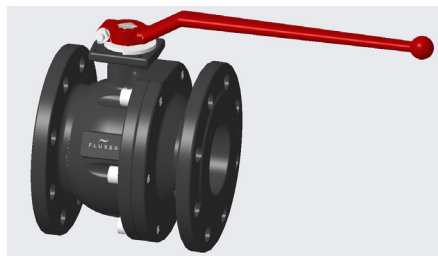
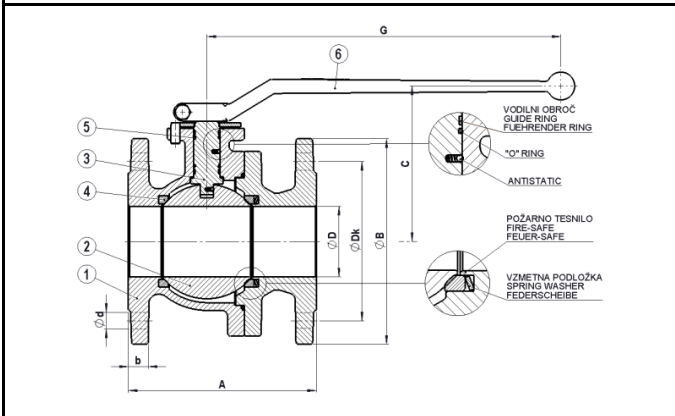


**Geflensde gietijzeren kogelkraan - volle doorlaat**  
**DN15-300**



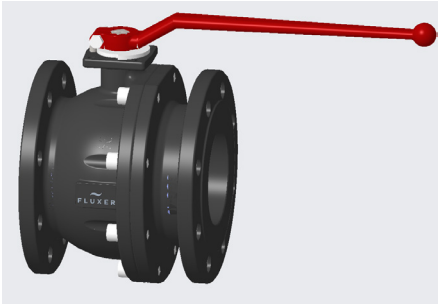
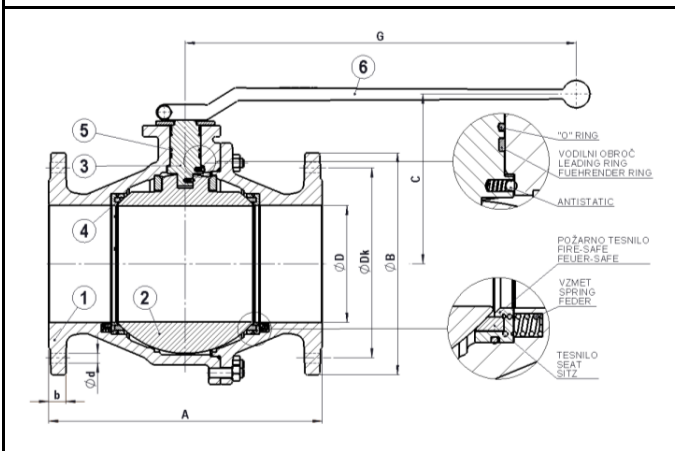
DN15-DN50

CE



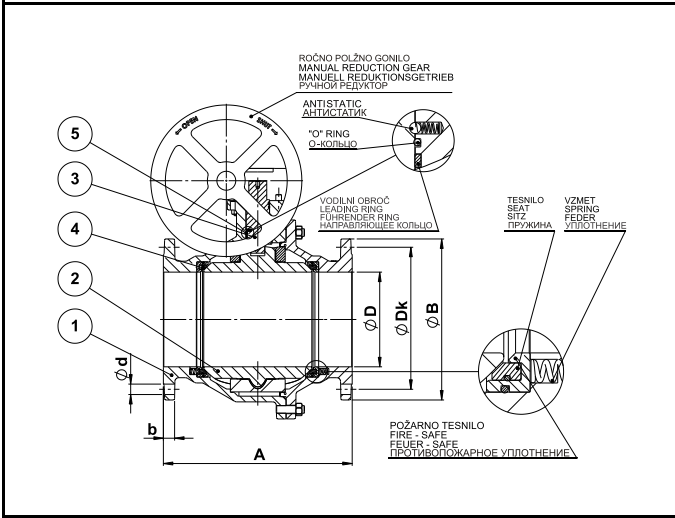
DN65-DN100

CE



DN125-DN150

CE



DN200-DN300

CE

## Temperatuurbereik : -10 °C/+180 °C

### Gebruikte materialen

1	Huis	Nodulair gietijzer– EN-GJS-400-15 (GGG40)
2	Kogel	RVS (A304)
3	Spindel	RVS (A420)
4	Zitting	PTFE
5	Spindelpakking	PTFE
6	Hendel	Aluminium

### PN16...ISO

### PN16

Art. nr.	DN	A	ØB	C	ØD	G	b	ØDk	Ød	Nr.	ISO	As K x h	Gewicht (kg)
0193.1103	15	115	95	72	13	158	16	65	14	4	F03	11 x 13,5	2,00
0193.1104	20	120	105	82	19,5	158	18	75	14	4	F03	11 x 13,5	3,30
0193.1105	25	125	115	83	25	158	18	85	14	4	F04	11 x 13,5	3,60
0193.1106	32	130	140	102	32	180	18	100	18	4	F05	14 x 18	5,40
0193.1107	40	140	150	107	40	180	18	110	18	4	F05	14 x 18	6,70
0193.1108	50	150	165	120,5	50	210	20	125	18	4	F05	14 x 18	8,90
0191.1109	65	170	185	140	63,5	320	18	145	18	4	F07	17 x 23	14,70
0191.1110	80	180	200	151	78	320	20	160	18	8	F07	17 x 23	20,11
0191.1111	100	190	220	166	99	320	20	180	18	8	F07	17 x 23	26,00
0191.1112	125	325	250	201	124	500	22	210	18	8	F10	22 x 27	50,00
0191.1113	150	350	285	218	149	500	22	240	22	8	F10	22 x 27	69,50
0191.1114	200	400	340		200		24	295	22	12	F12	22 x 27	144,00
0191.1115	250	450	405		250		26	355	26	12	F14	K36	235,00
0191.1116	300	500	460		300		29	410	26	12	F14/16	K36	329,00

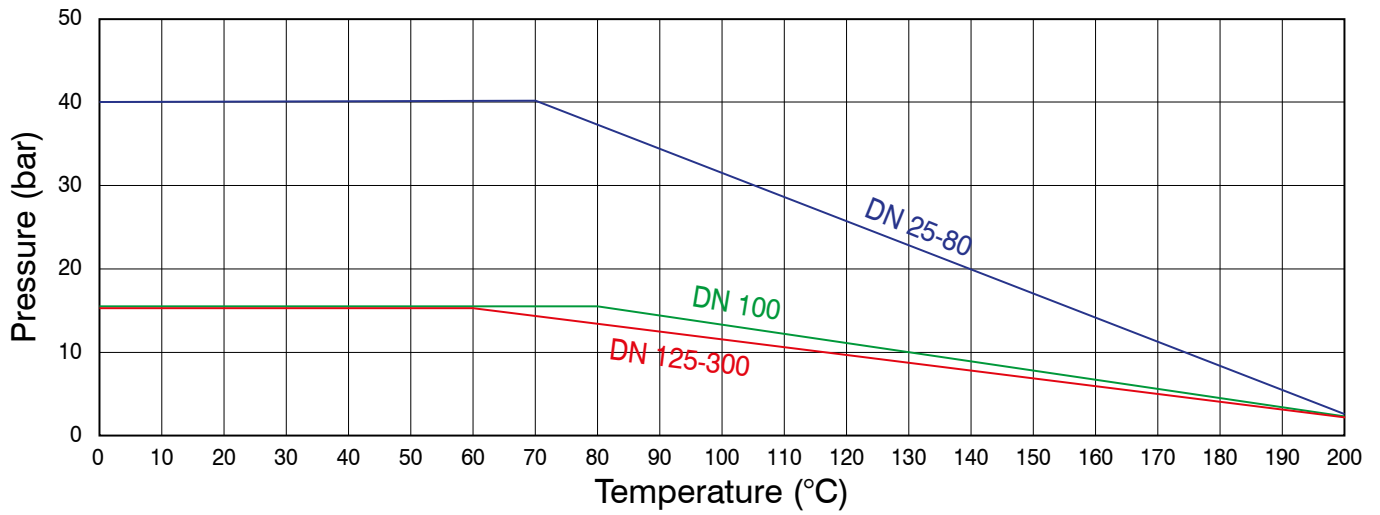
Trunion gemonteerde kogel

### Notes

Face to face: DIN3202 F18.  
DN200 – DN300 met gearbox  
Firesafe en potentiaalvrij  
Ook mogelijk in PN40



### Pressure / Temperature chart



Stem, body seals

NBR (Max 100°C)

FPM - gas (60°C)

FPM (150°C)

EPDM (150°C)

PTFE (200°C)